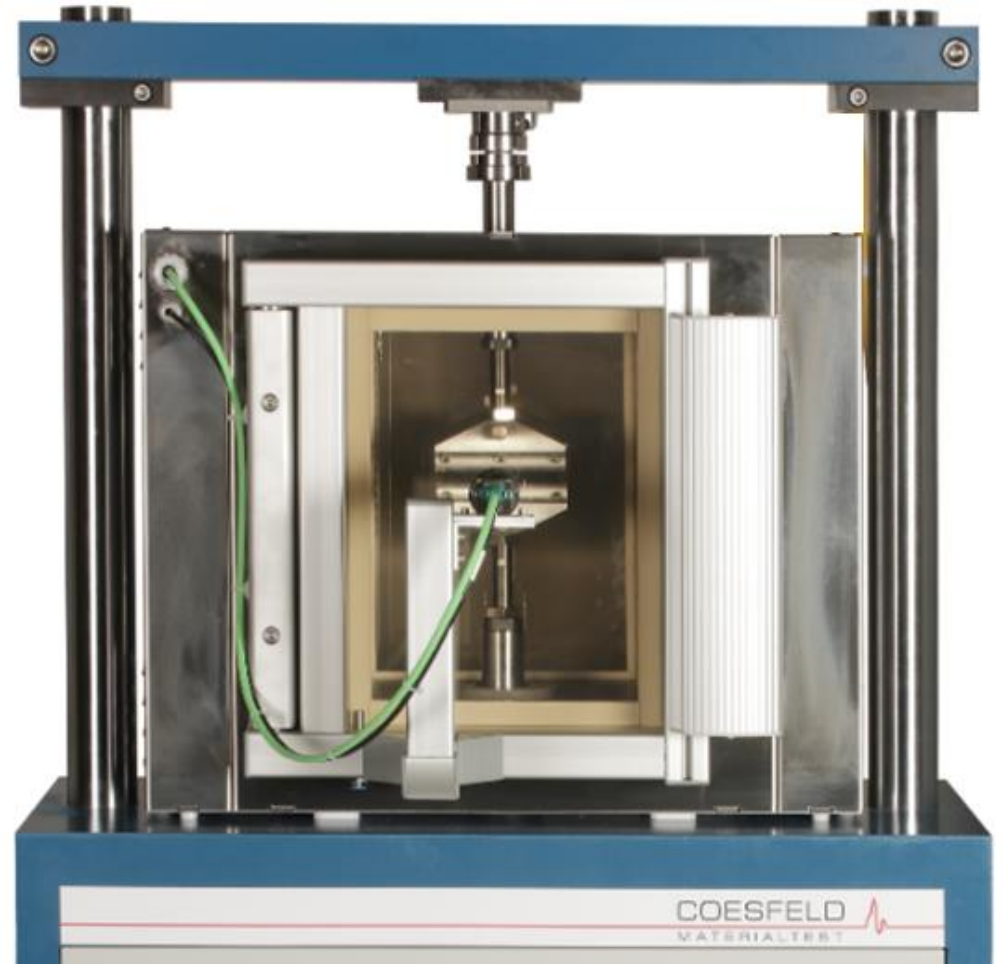


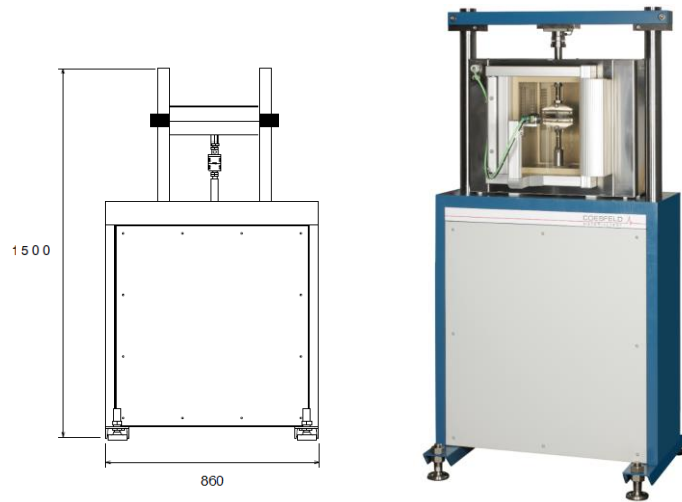
Electro Dynamic Tester

COESFELD
MATERIALTEST

www.coesfeld.com



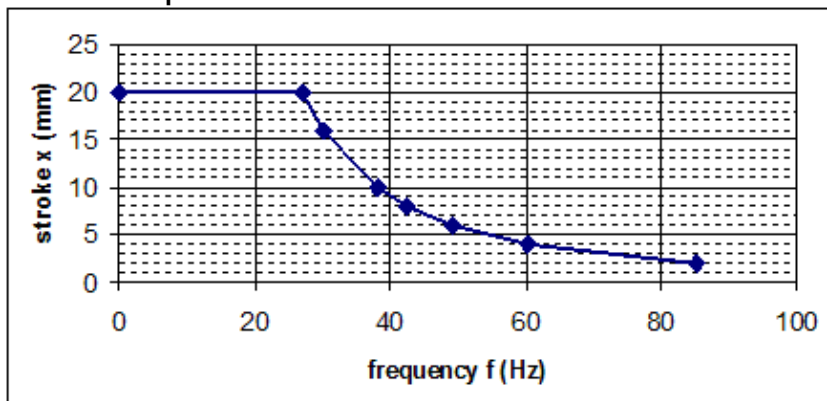
Electro Dynamic Tester



Technical Specification

| | | |
|-------------------|------------|---------|
| Static max force | 1.800 N | 4.000 N |
| Dynamic max force | 3.500 N | 7.500 N |
| Stroke | 0 - 50 mm | |
| Frequencies | 1 - 100 Hz | |
| Travel Resolution | 1 μ m | |
| Sampling Rate | 1 kHz | |

Power Spectrum

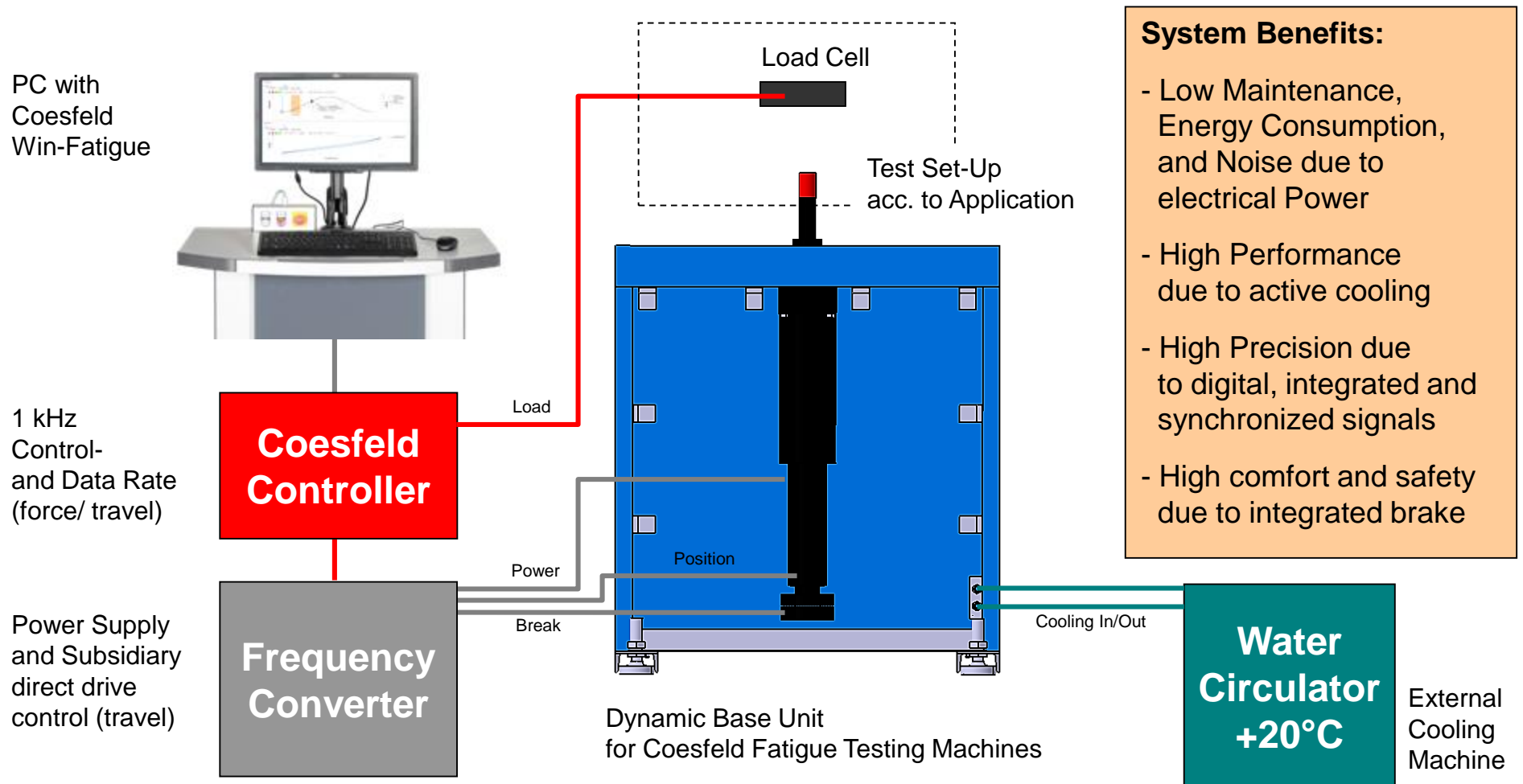


Dimensions and Connections

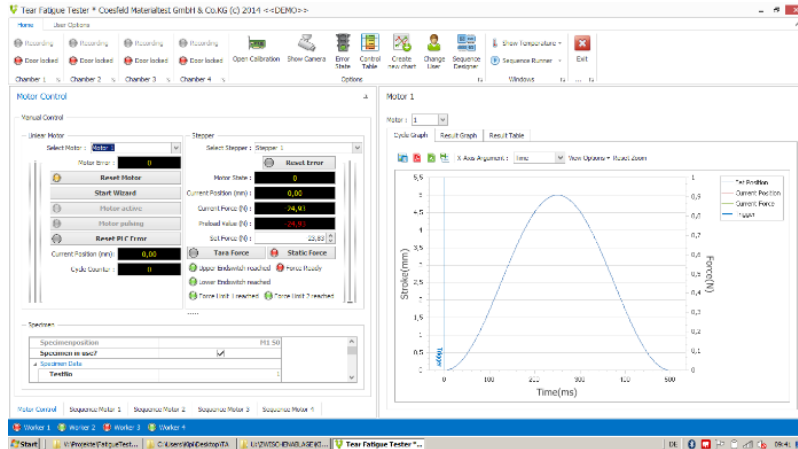
| | |
|--------------------|------------------------|
| Dimensions (WxDxH) | 1.200x900x1.700 mm |
| Weight | 850 kg |
| Mains | 3~400 V, 50/60 Hz N/PE |
| Power | 23 kVA |
| Cooling | Water |

Working Principle of Coesfeld Electro Dynamic Tester

Heart of the electro dynamic fatigue tester is a direct linear electrical piston with integrated sensor and brake, which is powered by a frequency converter and controlled by the central and synchronized Coesfeld controller.



Electro-Dynamic System



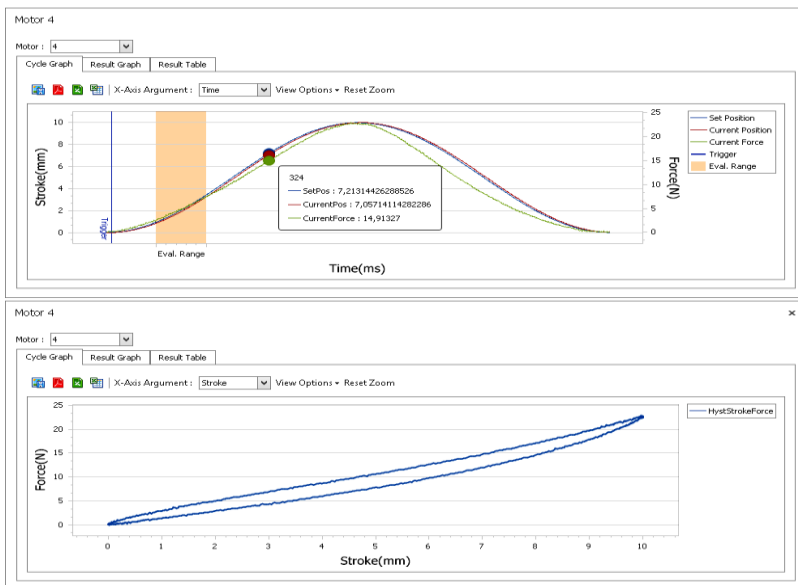
Full operation via Software

- Control mode: force, travel
- Signal type: sine, ..., custom
- Frequency: 0-50Hz
- Program schedule design

Data Recording and Analysis

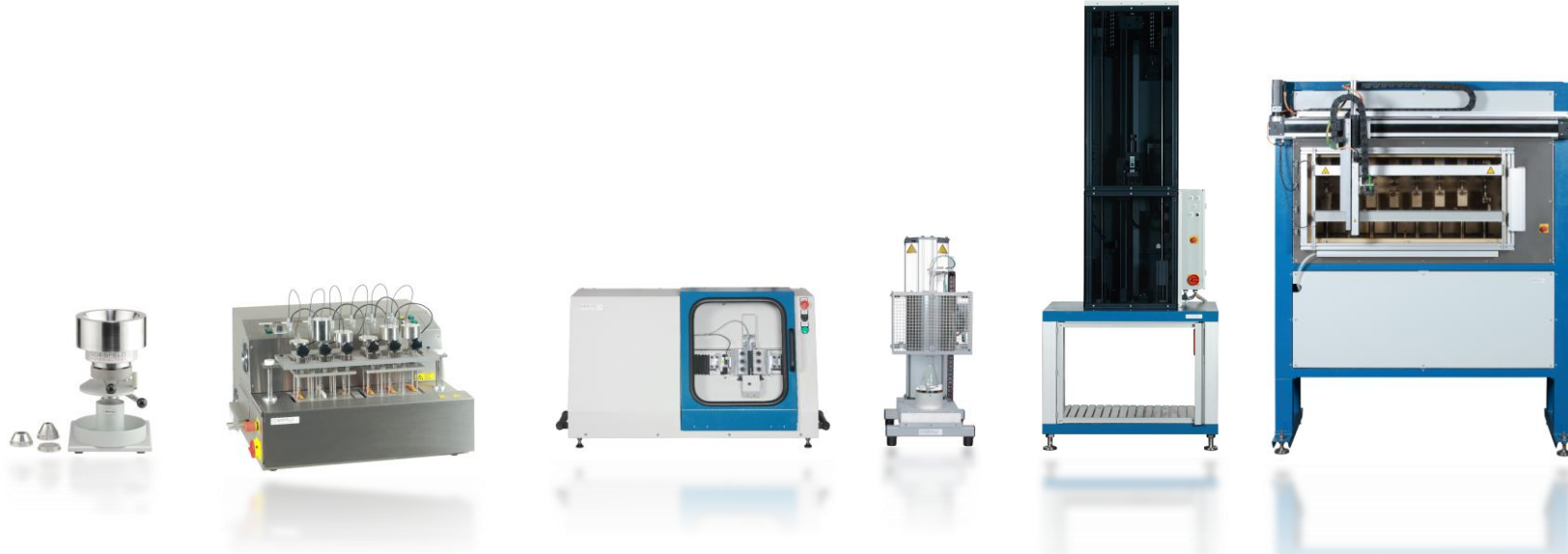
- Time Signals/ Fourier Transformation
 - Force
 - Stroke
- Energies
 - Total, Elastic, Dissipated
- Loss Modulus/ Loss Angle

Full Raw Data Export



COESFELD

MATERIALTEST



Coesfeld GmbH & Co. KG

Tronjestr. 8
44319 Dortmund

T +49 231 91 29 80-0
F +49 231 17 98 85

mail@coesfeld.com

www.coesfeld.com